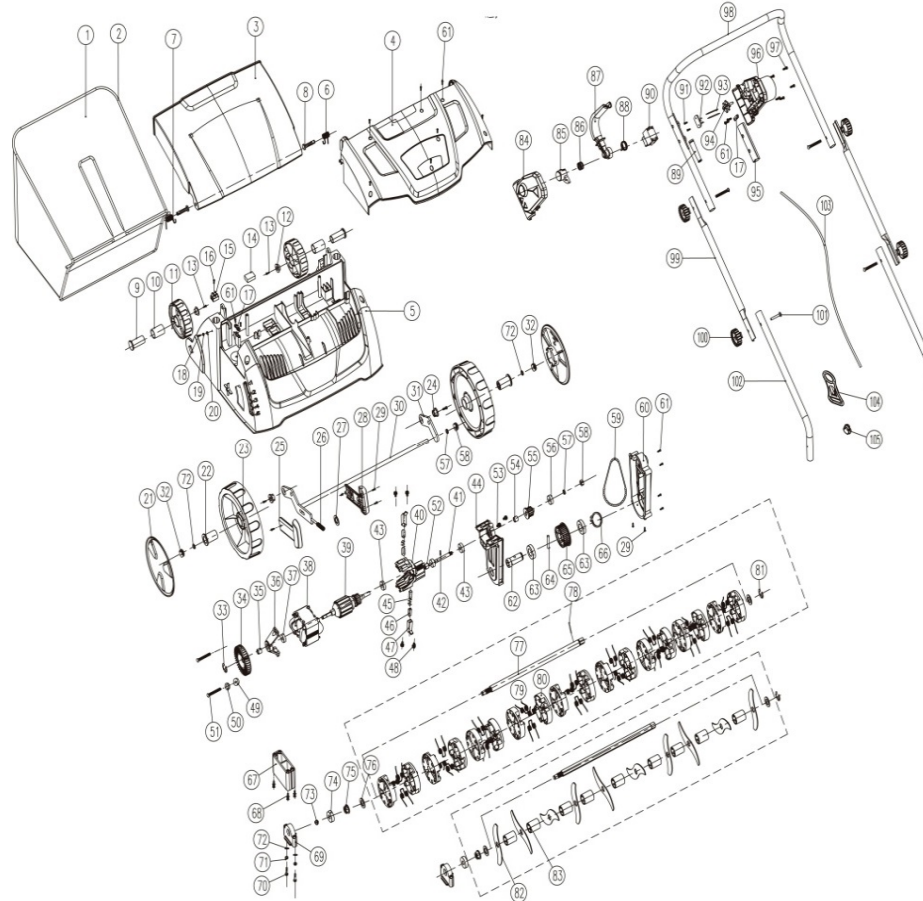


VAS 1300



No	Code	Name	Qty	No	Code	Name	Qty
1	036526	Clippings bag	1	25		Left handle cover	1
2	036527	Grass frame holder	1	26		The raise spring	1
3		Rear cover	1	27		Flat gasket	1
4		Motor cover	1	28		Right handle cover	1
5		Housing	1	29		Self tapping screw 4*12	8
6		Right rear cover torsional spring	1	30	036538	Shaft components	1
7		Left rear cover torsional spring	1	31		Plate	1
8		Plastic pin	2	32		Self-locking nut	2
9	036531	Rear Axle	2	33		Split washer	1
10	036532	Rear shaft sleeve	2	34	036539	Fan blade	1
11	036533	Rear wheel	2	35		Fan blade shaft sleeve	1
12		Rear-wheel hub cap	2	36	036540	Rear support	1
13		Self-tapping screw 5*14	2	37		Bearing 628Z	1
14	036534	PCB Assembly	1	38	036541	Stator assy'	1
15		Connector	2	39	036542	Rotor assy'	1
16		Self-tapping screw 3*18	1	40	036543	Front support	1
17		Cable clamp	1	41	036544	Gear shaft	1
18		Self-tapping screw 4*25	2	42		Small pulley shaft pin	1
19		Spring washer	2	43		609Bearing	2
20		Washer	2	44	036545	Drive Bracket	1
21	036535	Wheel cover	2	45	036546	Carbon brush	2
22	036536	Front axle	2	46	036547	Copper brush holder	2
23	036537	Front wheel	2	47	036548	Brush support	2
24		Front-wheel hub cap	2	48		Three combinations of screw 4*14	4

VAS 1300

No	Code	Name	Qty	No	Code	Name	Qty
49		Flat gasket	2	97		Self-tapping screw 4*20	8
50		Spring washer	2	98	036580	Upper handle	1
51		Stator screw	2	99	036581	Middle handle	2
52		Multi-roll bearing	1	100	036582	The join button	4
53		Three combinations of screw 4*12	3	101		Carriage head screw 6*45	4
54		Spindle cover	1	102	036583	Lower handle	2
55	036549	Small pulley components	1	103		Connecting wire	1
56	014131	Bearing 628Z	1	104		Line hang	1
57		Washer	2	105		Line deduction	2
58		Locknut M8	2	106			
59	036550	Belt 5M410	1	107			
60	036552	Transmission cover	1	108			
61		Self tapping screw 4*16	17	109			
62	036553	Big pulley shaft	1	110			
63		6904 deep groove ball bearings	2	111			
64		Big pulley shaft pin	1	112			
65		Big pulley	1	113			
66		Axis with circlips	1	114			
67	036555	Lower bearing housing	1	115			
68		Three combinations of screw 4*20	4	116			
69	036556	Upper bearing housing	2	117			
70		Bolt 6 * 45	2	118			
71		Spring washer	2	119			
72		Flat washer	4	120			
73		Axis with circlips	2	121			
74	014130	6200Z Bearing	2	122			
75		Hexagon nuts with flange	2	123			
76		Washer	4	124			
77	036557	Shaft	2	125			
78	036558	Locating pin	1	126			
79	036559	Grass rake spring	27	127			
80	036560	Grass rake bracket	18	128			
81		Split washer	2	129			
82	036561	Blade	10	130			
83	036562	Axle sleeve	9	131			
84	036563	Switch box cover	1	132			
85	036564	Switch button	1	133			
86	036565	Switch spring	1	134			
87	036566	Switch trigger	1	135			
88	036567	Switch torsion spring	1	136			
89	036568	Cable sleeve	1	137			
90	036569	Switch	1	138			
91	036570	Self-tapping screw 3*8	2	139			
92		Dead plate	1	140			
93		Connecting wire	2	141			
94	036571	Plug	1	142			
95	036572	Switch Bushing	1	143			
96	036574	Switch box lower cover	1	144			