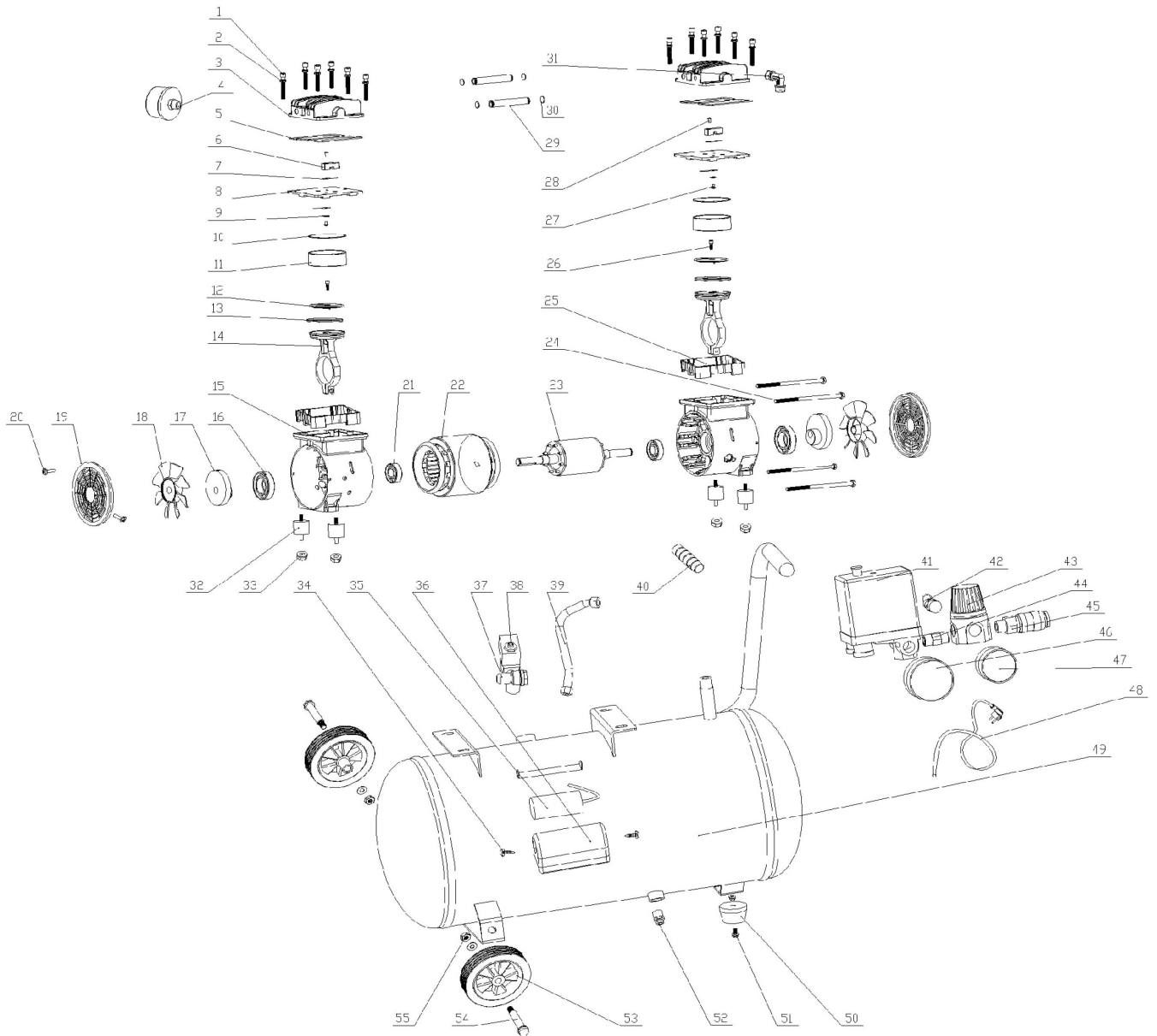


## VAT 50 LS





# EXPLODED PARTS LIST

Year: 2019

Page(s): 2/2

## VAT 50 LS

| No | Code  | Name                                    | Qty | No | Code  | Name        | Qty |
|----|-------|---|-----|----|-------|-------------|-----|
| 1  | 50826 | Bolt M5x45                              | 12  | 49 |       | Tank        | 1   |
| 2  |       | Plain 5                                 | 12  | 50 | 50861 | foot        | 1   |
| 3  | 50827 | Cylinder head                           | 2   | 51 |       | Bolt M8x20  | 1   |
| 4  | 50828 | Air filter                              | 1   | 52 | 50862 | Drain valve | 1   |
| 5  | 50829 | Seal ring                               | 2   | 53 | 50863 | Wheel       | 2   |
| 6  | 50830 | stop block                              | 2   | 54 | 50864 | Wheel axle  | 2   |
| 7  | 50831 | valve block                             | 4   | 55 |       | Nut M10     | 2   |
| 8  | 50832 | Valve plate                             | 2   | 56 | 50865 | Motor cover |     |
| 9  | 50833 | plates                                  | 2   |    |       |             |     |
| 10 | 50834 | O seal ring $\phi 68.7 \times \phi 2.5$ | 2   |    |       |             |     |
| 11 | 50835 | Cylinder $\phi 63.7$                    | 2   |    |       |             |     |
| 12 | 50836 | Piston plate                            | 2   |    |       |             |     |
| 13 | 50837 | Piston ring                             | 2   |    |       |             |     |
| 14 | 50838 | Connecting rod                          | 2   |    |       |             |     |
| 15 | 50839 | Crankcase                               | 2   |    |       |             |     |
| 16 | 50840 | Bearing 6006Z                           | 2   |    |       |             |     |
| 17 | 50841 | Crank                                   | 2   |    |       |             |     |
| 18 | 50842 | Fan                                     | 2   |    |       |             |     |
| 19 | 50843 | Fan cover                               | 2   |    |       |             |     |
| 20 |       | Bolt ST3.3x8                            | 4   |    |       |             |     |
| 21 | 50844 | Bearing 6203Z                           | 2   |    |       |             |     |
| 22 | 50845 | Stator                                  | 1   |    |       |             |     |
| 23 |       | Rotor                                   | 1   |    |       |             |     |
| 24 |       | Bolt M5x160                             | 4   |    |       |             |     |
| 25 | 50846 | Cylinder Bracket                        | 2   |    |       |             |     |
| 26 | 50847 | Bolt M6x20                              | 2   |    |       |             |     |
| 27 | 50848 | Bolt M4x6                               | 2   |    |       |             |     |
| 28 | 50849 | Bolt M4x8                               | 2   |    |       |             |     |
| 29 | 50850 | Connecting pipe                         | 2   |    |       |             |     |
| 30 | 50851 | O seal ring $\phi 13.8 \times \phi 1.9$ | 4   |    |       |             |     |
| 31 | 50852 | cambered axle                           | 1   |    |       |             |     |
| 32 | 50853 | Foot mat                                | 4   |    |       |             |     |
| 33 |       | Nut M6                                  | 4   |    |       |             |     |
| 34 |       | Bolt M5x8                               | 2   |    |       |             |     |
| 35 | 50854 | Capacitor                               | 1   |    |       |             |     |
| 36 | 50855 | Capacitor cover                         | 1   |    |       |             |     |
| 37 | 50856 | Checking valve                          | 1   |    |       |             |     |
| 38 | 50857 | Solenoid valve                          | 1   |    |       |             |     |
| 39 | 50858 | High pressure tube                      | 1   |    |       |             |     |
| 40 | 50859 | Handle sets                             | 1   |    |       |             |     |
| 41 | 50860 | Pressure switch                         | 1   |    |       |             |     |
| 42 |       | Safety valve                            | 1   |    |       |             |     |
| 43 |       | Pressure regulating valve               | 1   |    |       |             |     |
| 44 |       | 1/4" Double joint                       | 1   |    |       |             |     |
| 45 |       | 1/4" Quick connect                      | 1   |    |       |             |     |
| 46 |       | Y50 Pressure guage                      | 1   |    |       |             |     |
| 47 |       | Y40 Pressure guage                      | 1   |    |       |             |     |
| 48 |       | Power cord                              | 1   |    |       |             |     |