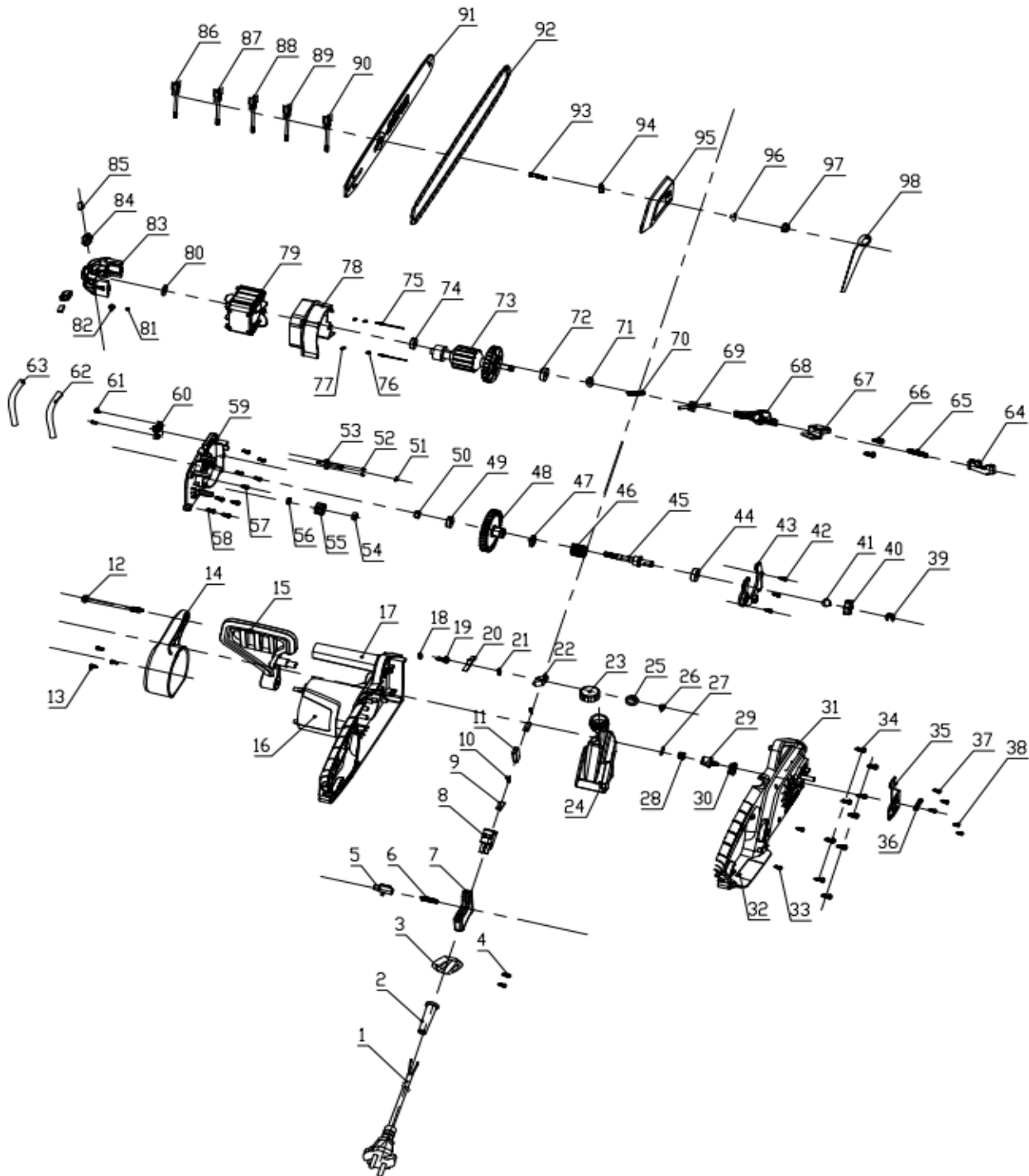


VET 2035





EXPLODED PARTS LIST

VET 2035

| No | Code | Name | Qty | No | Code | Name | Qty |
|----|-------|-------------------------|-----|----|-------|---------------------|-----|
| 1 | | CABLE | 1 | 48 | 44770 | BIG GEAR | 1 |
| 2 | | CABLE SHEATH | 1 | 49 | 51152 | BEARING | 1 |
| 3 | | WIRE FIX PLATE | 1 | 50 | | NUT | 1 |
| 4 | | SCREW | 2 | 51 | 51174 | O RING | 1 |
| 5 | | SELF LOCK BUTTON | 1 | 52 | | SEAL RING | 2 |
| 6 | | BRAKE SPRING | 1 | 53 | 58386 | OIL NOZZLE | 1 |
| 7 | | SWITCH BUTTON | 1 | 54 | 44766 | NUT | 1 |
| 8 | 44754 | MAIN SWITCH | 1 | 55 | 44758 | SMALL GEAR | 1 |
| 9 | | PRESS PLATE | 2 | 56 | | GEAR SHEATH | 1 |
| 10 | | SCREW | 2 | 57 | | SCREW | 5 |
| 11 | | CAPACITATOR | 1 | 58 | | SCREW | 4 |
| 12 | | SCREW | 1 | 59 | 44759 | SUPPORTER | 1 |
| 13 | | SCREW | 3 | 60 | | OIL PUMP | 1 |
| 14 | 44755 | MOTOR REAR COVER | 1 | 61 | | SCREW | 2 |
| 15 | | PROTECT COVER | 1 | 62 | | OUTLET PIPE | 1 |
| 16 | | LABEL | 1 | 63 | | INLET PIPE | 1 |
| 17 | 44778 | LEFT CASE | 1 | 64 | | PUSH ROD | 1 |
| 18 | | WASHER | 1 | 65 | | PUSH ROD SPRING | 1 |
| 19 | | SCREW | 1 | 66 | | SCREW | 2 |
| 20 | | SPRING LEAF | 1 | 67 | 44768 | FIXED PLATE | 1 |
| 21 | | SCREW | 1 | 68 | 44760 | CONNECT ROD | 1 |
| 22 | 60546 | MICRO SWITCH | 1 | 69 | 44761 | BRAKE ROD | 1 |
| 23 | | OIL TANK CAP | 1 | 70 | | BRAKE SPRING | 1 |
| 24 | 44771 | OIL TANK | 1 | 71 | | WASHER | 1 |
| 25 | | OIL TANK WAHSER | 1 | 72 | 51159 | BEARING | 1 |
| 26 | | BEARTHHER | 1 | 73 | 44773 | ARMATURE | 1 |
| 27 | 58375 | OIL TANK CONNECTOR CORE | 1 | 74 | | BEARING | 1 |
| 28 | | SPONGE | 1 | 75 | | SCREW | 2 |
| 29 | 60575 | OIL TANK CONNECTOR | 1 | 76 | | WASHER | 2 |
| 30 | 58372 | OIL TANK SEAL RING | 1 | 77 | | WASHER | 2 |
| 31 | 44777 | RIGHT CASE | 1 | 78 | 44762 | WIND BOARD | 1 |
| 32 | | STICKE | 1 | 79 | 44772 | STATOR | 1 |
| 33 | | SCREW | 2 | 80 | | HARD PAPER | 1 |
| 34 | | SCREW | 9 | 81 | | WASHER | 2 |
| 35 | 44756 | SPIKE BUMPER | 1 | 82 | | NUT | 2 |
| 36 | | SEAL RING | 1 | 83 | 44763 | MOTOR BACK SUPPORT | 1 |
| 37 | | SCREW | 3 | 84 | 44764 | COPPER BRUSH HOLDER | 2 |
| 38 | | SCREW | 2 | 85 | 44765 | ELECTRIC CARBON | 2 |
| 39 | 51144 | E SHIELD RING | 1 | 86 | | CONNECT LINE 1 | 1 |
| 40 | 51143 | SPROCKET | 1 | 87 | | CONNECT LINE 2 | 1 |
| 41 | 51142 | TENSION SPRING | 1 | 88 | | CONNECT LINE 3 | 2 |
| 42 | | SCREW | 3 | 89 | | CONNECT LINE 4 | 2 |
| 43 | | ANTI DUST COVER | 1 | 90 | | CONNECT LINE 5 | 1 |
| 44 | 51159 | BEARING | 1 | 91 | | BAR | 1 |
| 45 | 44757 | OUTPUT SHAFT | 1 | 92 | | CHAIN | 1 |
| 46 | 44775 | TORSION SPRING | 1 | 93 | | SCREW | 1 |
| 47 | | axle sheath | 1 | 94 | | NUT | 1 |

VET 2035



EXPLODED PARTS LIST

VET 2035

| No | Code | Name | Qty | No | Code | Name | Qty |
|----|-------|-----------------|-----|----|------|------|-----|
| 95 | 44774 | SPROKET COVER | 1 | | | | |
| 96 | 58397 | LOCATION SLEEVE | 1 | | | | |
| 97 | 44766 | NUT | 1 | | | | |
| 98 | | SPANNER | 1 | | | | |
| | | | | | | | |
| | | | | | | | |
| | | | | | | | |
| | | | | | | | |
| | | | | | | | |
| | | | | | | | |
| | | | | | | | |
| | | | | | | | |
| | | | | | | | |
| | | | | | | | |
| | | | | | | | |
| | | | | | | | |
| | | | | | | | |
| | | | | | | | |
| | | | | | | | |
| | | | | | | | |
| | | | | | | | |
| | | | | | | | |
| | | | | | | | |
| | | | | | | | |
| | | | | | | | |
| | | | | | | | |
| | | | | | | | |
| | | | | | | | |
| | | | | | | | |
| | | | | | | | |
| | | | | | | | |
| | | | | | | | |
| | | | | | | | |
| | | | | | | | |
| | | | | | | | |
| | | | | | | | |
| | | | | | | | |
| | | | | | | | |
| | | | | | | | |
| | | | | | | | |
| | | | | | | | |
| | | | | | | | |