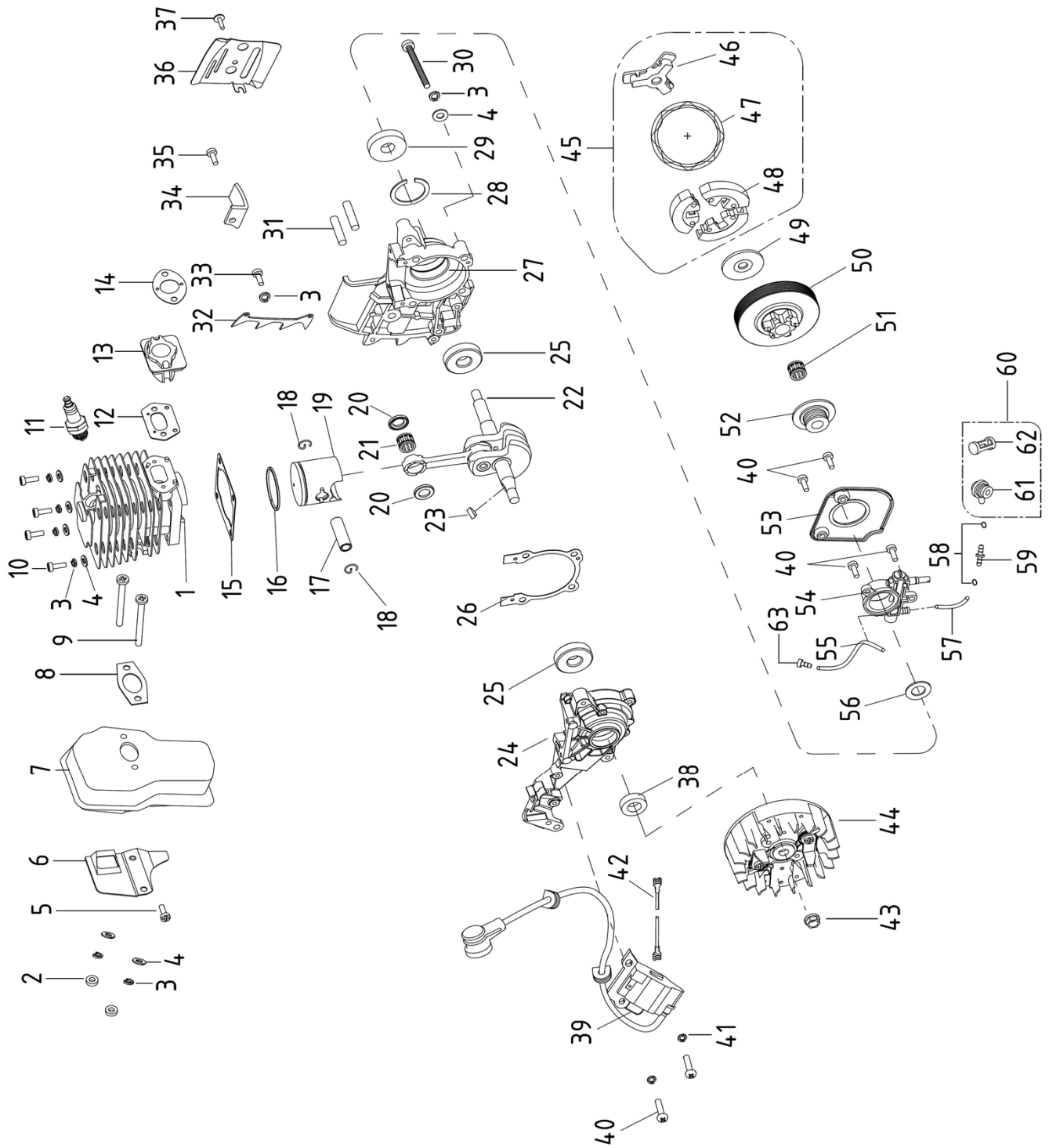


## VGS 380 S



Engine unit



# EXPLODED PARTS LIST

Year: 2017

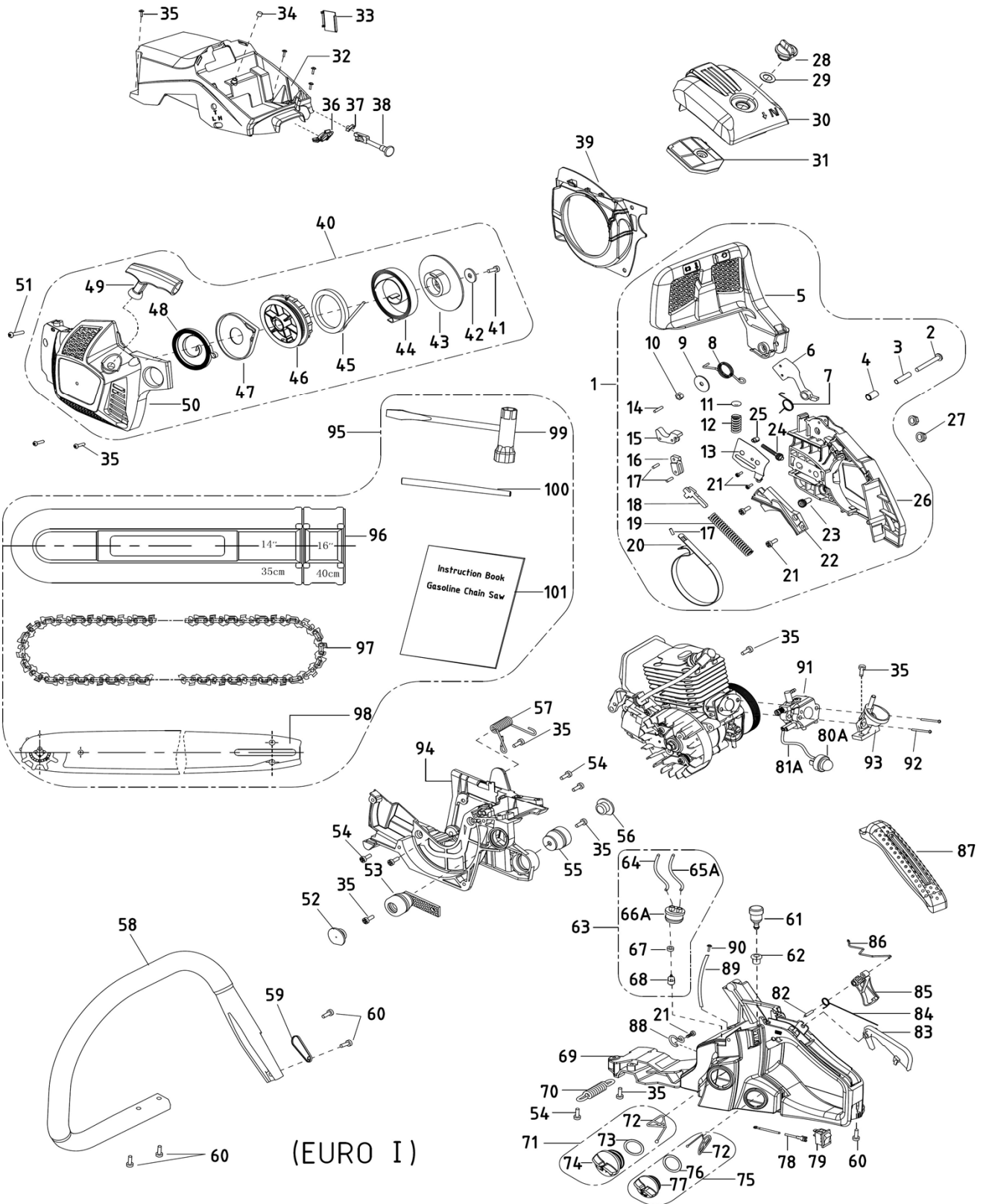
Page(s): 2/5

## VGS 380 S

No	Code	Name	Qty	No	Code	Name	Qty
1	046564	cylinder body	1	49		clutch adjusting washer	1
2		nut M5	2	50	010572	clutch shell	1
3		washer 5	11	51	010574	needle bearing 10×13×13	1
4		washer 5	10	52	010575	worm	1
5		screw M5×14	1	53	046566	cover plate	1
6		silencer cover plate	1	54	010577	oil pump	1
7	023069	silencer body	1	55	010579	oil outgoing tube 3×6.5×75	1
8	010540	silencer sealing gasket	1	56		worm washer 10×18×1	1
9	010541	muffler connecting screw	2	57	010580	oil ingoing tube 3×6.5×68	1
10		screw M5×20	4	58		oil tube clip	2
11	010542	spark plug NHSP LD L8RTF	1	59	019889	oil tube tie-in	1
12	010543	air intake tube sealing gasket	1	60		oil filter screen assy	1
13	010544	air intake tube	1	61		nozzle	1
14	010545	carburetor sealing gasket	1	62		oil filter screen	1
15	010546	cylinder sealing gasket	1	63	040083	oil spray nozzle	1
16	038367	piston ring	1				
17	046565	piston pin	1				
18	010550	piston pin circlip	2				
19	038366	piston	1				
20	010553	needle bearing ring	2				
21	010554	needle bearing 10×14×11	1				
22	010555	crank shaft components	1				
23	010556	semicircular key 3×3.5×10	1				
24	010557	left crank case	1				
25	010558	bearing 6201 grade D 12×32×10	2				
26	010559	case body sealing gasket	1				
27	010560	right crank case	1				
28	010561	shield ring 32	1				
29	010562	oil seal 12×32×5.5	1				
30		screw M5X30	4				
31	013198	double-screw bolt AYM8-M8×26-8.8	2				
32	031902	spiked bumper	1				
33		screw M5×12	1				
34	035192	chain catcher	1				
35		chain catcher screw	1				
36	031903	damper	1				
37		screw M4×10	1				
38	010563	oil seal 12×22×7	1				
39	010564	igniter	1				
40		screw M4×14	6				
41		washer4	2				
42		extinction conductor	1				
43		nut M8×1	1				
44		flywheel assembly	1				
45	010570	clutch assembly	1				
46		retainter	1				
47		clutch extension spring	1				
48		shoe block	1				

**Engine unit**

## VGS 380 S



**Base unit**



# EXPLODED PARTS LIST

Year: 2017

Page(s): 4/5

## VGS 380 S

No	Code	Name	Qty	No	Code	Name	Qty
1	046550	Clutch cover assembly	1	49	010608	start handle	1
2		Screw M5×40	1	50		starter cover	1
3		pin gland 5×6.3×30	1	51		tapping screw ST4.8×19	1
4		heavy brock gland 6.3×9×15	1	52		tapping screw ST4.8×25	5
5		front damper	1	53	010525	cushion socket 1	1
6		heavy brock	1	54		screw M5×14	1
7		heavy brock spring	1	55	010527	cushion socket 2	5
8	010508	brake torsion rod spring	1	56	010667	right dust cover	1
9		washer 5.2×23×1.2	1	57	017061	front handle spring	1
10		lock- nut M5	1	58	014855	front handle	1
11		spring base	1	59			1
12		front guard spring	1	60		torsion rod spring cover plate	1
13		tensioner cover plate	1	61	017065	balancer body assembly	1
14		pin 3×14	1	62	012292	balancer root	1
15		main level	1	63	019886	fuel filter assembly with tube	1
16		secondary pull-rod	1	64	019885	fuel tube 2.5×5×185	1
17		pin 3×9	3	65A		scavenge tube	1
18		break control rod	1	66A		tube root	1
19		brake spring	1	67		clump weight	1
20		break strap	1	68		fuel filter assembly	1
21		tapping screw ST4.2X9.5	5	69	031907	base	1
22		break spring cover plate	1	70	017063	base spring	1
23	031916	tension gear	1	71	046561	Fuel Tank-cap Assy	1
24	031915	tightener screw	1	72		anti-drop plate	2
25	046540	tension block	1	73		packing washer 24.7×3.55	1
26		Clutch cover	1	74	046546	petrol cover	1
27		nut M8	2	75	046562	Cap Oil Tank	1
28	046551	air filter lock nut	1	76		packing washer 20×3.1	1
29		lock nut washer 15×26×1	1	77	046548	oil cover	1
30	046552	air filter cover	1	78		Earth cable	1
31	010516	air filter	1	79		extinction switch	1
32	046553	upper cover plate	1	80A	010532	Primer pump	1
33		anti-freeze block	1	81A	017071	Pump tube 2.5×5×170	1
34		shock block	1	82		pin 5×25	1
35		tapping screw ST4.8×16	12	83	010534	trigger control rack	1
36	017058	dust shield	1	84	010535	trigger torsion rod spring	1
37	017059	throttle lever retaining bracket	1	85	010536	trigger	1
38	046554	throttle rod	1	86		throttle rod	1
39	046555	bossing	1	87	046563	handle cover	1
40	046556	starter assembly	1	88		circlip for nozzle	1
41		tapping screw ST4.8×13	1	89	010580	vent tube 3.5×6.5×72	1
42		washer 5	1	90		tapping screw ST4.2×14	1
43	046557	ratchet wheel	1	91	010538	carburetor	1
44	046558	strip spring	1	92		carburetor screw	2
45		start stretching wire3×920	1	93	031946	air intake socket	1
46	046559	start plate	1	94	021802	Case	1
47	046560	coil-spring gland	1	95		Accessory Assy	1
48		start coil-spring	1	96		Chain cover	1

**Base unit**

