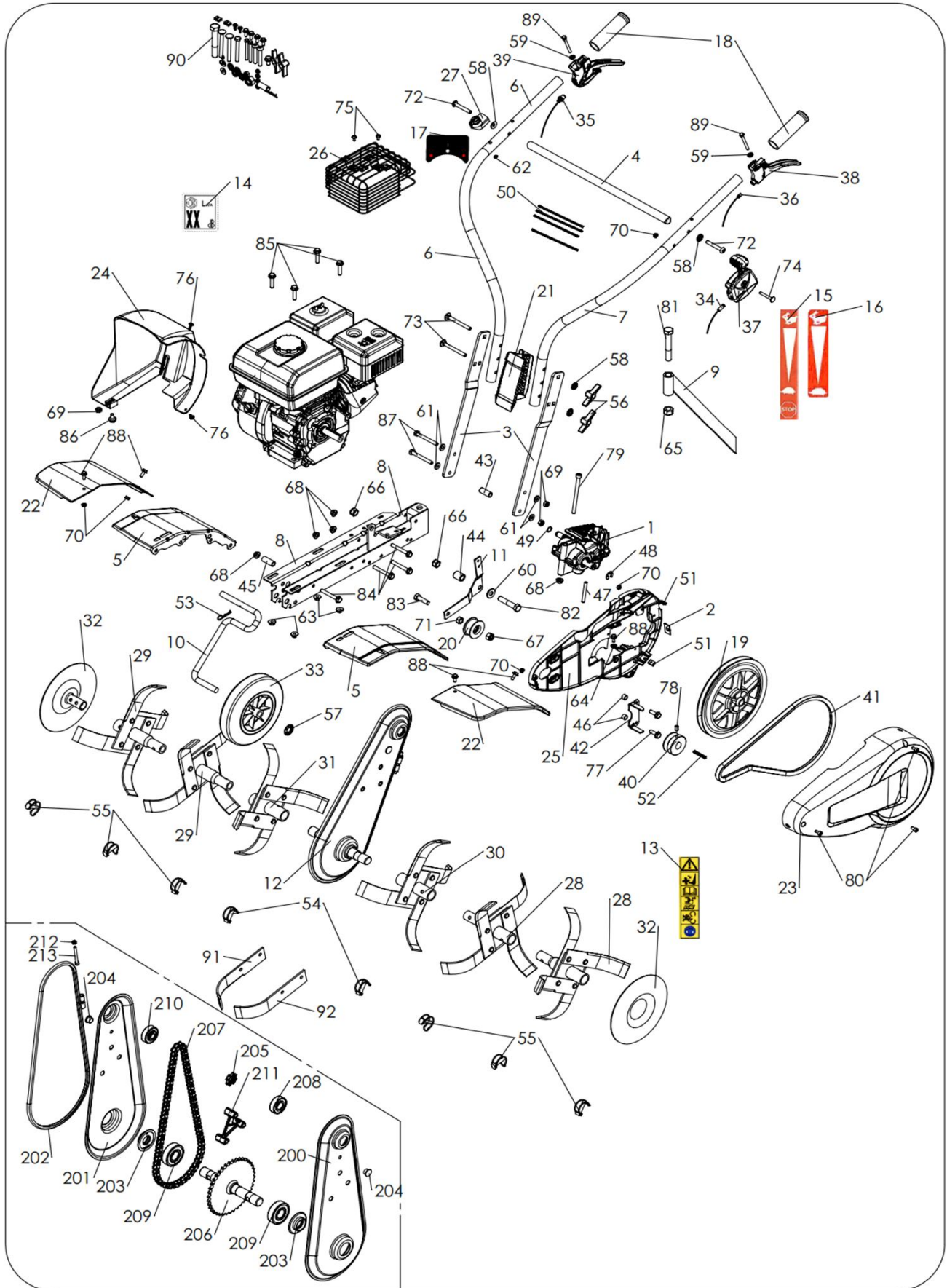


VTB 660 - Unit



VTB 660 - Unit

No	Code	Name	Qty	No	Code	Name	Qty
1	041948	KIT EVO REVERSE GEAR BOX	1	24		BACK COVER M1201 RED RAL3001	1
2		SNAP IN STOP	1	24		BACK COVER M1201 BLACK RAL9005	1
3		HANDLEBAR BRACKET 40x6 DRAW6.5 GREY RAL7040	2	25		PLASTIC COVER PLATE M1201 (REVERSE)	1
3		HANDLEBAR BRACKET 40x6 DRAW6.5 GREEN RAL6005	2	26		EXHAUST GRILL R180/R210	1
3		HANDLEBAR BRACKET 40x6 DRAW6.5 RED RAL3001	2	26		EXHAUST GRILL GP160	1
3		HANDLEBAR BRACKET 40x6 DRAW6.5 BLACK RAL 9005	2	27	041276	SWITCH ENGINE CUT-OFF	1
3		HANDLEBAR BRACKET 40x6 DRAW6.5 GREY (8120)	2	28		LEFT ADDITIONAL TINE D25 STRAIGHT BLADE (40X4)	2
3		HANDLEBAR BRACKET 40x6 DRAW6.5 GREY (627)	2	29		RIGHT ADDITIONAL TINE D25 STRAIGHT BLADE (40X4)	2
4		HANDLEBAR LINK TUBE TERRO GREEN RAL6029	1	30		LEFT TINE REMOVABLE D25 STRAIGHT BLADE (40X4)	1
4		HANDLEBAR LINK TUBE TERRO RED RAL3001	1	31		RIGHT TINE REMOVABLE D25 STRAIGHT BLADE (40X4)	1
4		HANDLEBAR LINK TUBE TERRO BLACK RAL9005	1	32		DISK D25 BLACK RAL9005	2
5		TINE GUARD M1201 RED RAL3001	4	33		BLACK WHELL D200 BORE 14 LG.60	1
5		TINE GUARD M1201 GREY (8120)	4	34		THROTTLE CABLE LG 1250MM STROKE 60MM	1
5		TINE GUARD M1201 BLACK RAL9005	2	34	041938	THROTTLE CABLE 1150 STROKE 60	1
6		LEFT HANDLEBAR M1201 BLACK RAL9005	1	35	041286	CLUTCH CABLE LG1050 CF133 LAKS LEVER x CLIP TIP	1
7		LEFT HANDELBAR M1201 BLACK RAL9005	1	36	041939	GEAR CABLE	1
8		FRAME OF FTR RED RAL3002	1	37	041288	THROTTLE LEVER LGC BLACK KNOB RAL9005	1
8		FRAME OF FTR GRIS (627)	1	38	041940	LEVER LAB Ø25 STROKE 20	1
8		FRAME OF FTR GREY (8120)	1	39	041941	HANDLEVER LAKS C27 NUT M6 CLUTCHING SYMBOL	1
8		FRAME OF FTR BLACK RAL9005	1	40	041290	ENGINE PULLEY D55 BORE Ø19,06	1
9		SPUR FOR PRIMO BLACK RAL9005	1	41	041942	BELT BAREBACK 6841Gts A39 BBK	1
10		TRANSPORT WHEEL SUPPORT WIRE D14 ZNCR3	1	42		DRIVE BELT ENGINE PULLEY D55	1
11		PLATE FOR CLUTCH LEVER COMPACT	1	43		SPACER Ø9 X Ø14 X 34Z	1
12	041937	TRANSMISSION GREY FLANGED	1	44		CLUTCH LEVER SPACER	1
13		STICKER SECURITY	1	45		SPACER 14x9x35 xZ	1
14		STICKER NOISE LEVEL '100 dB'	1	46		SPACER Ø13 X Ø9 X 8.5	2
14		STICKER NOISE LEVEL '93Db'	1	47		PULLEY PIN SHAFT MECANIQUE	1
14		LABEL "96 dB"	1	48		RADIAL RETAINING RING Ø12	1
15		STICKER THROTTLE CONTROL STOP-MIN-MAX	1	49		CIRCLIP E13	1
16		LABBEL TROTTLE CONTROL WITHOUT STOP	1	50		COLLAR	4
17		STICKER SWITCH ON-OFF GX	1	51		CLIPS 4.2	2
18		HAND SIDE GRIP	2	52		KEY 4.76X4.76X40 DRO TOL h 9 - XC 48	1
19		TRANSMISSION PULLEY	1	53		CLIP PIN BETA 2 Z	1
20		CLUTCH RUNNER ROUL 6200 ZZ	1	54	041291	CLIP PIN D10 x 36	2
21		HANDLEBAR JUNCTION D25 YELLOW RAL1003	1	55	041292	CLIP PIN D8 x 36	6
21		HANDLEBAR JUNCTION D25 GREEN RAL6029	1	56		BLACK HANDLEBAR TIGHTENING LEVER	2
21		HANDLEBAR JUNCTION D25 BLACK RAL9005	1	57		STARLOCK WASHER DIA 14	1
21		HANDLEBAR JUNCTION D25 RED RAL3001	1	58		CONTACT WASHER 8	4
22		ADDITIONAL TINE GUARD YELLOW RAL1003	4	59		CONTACT WASHER 6	2
22		ADDITIONAL TINE GUARD BLUE RAL5010	4	60		PLATE WASHER M 12X27X2.5 Z NFE 25513	1
22		ADDITIONAL TINE GUARD RED RAL3001	4	61		PLATE WASHER M 8X18X1.5 Z NFE 25513	4
22		ADDITIONAL TINE GUARD BLACK RAL9005	2	62		WASHER M 3.2 X 10 X 1 Z	1
22		ADDITIONAL TINE GUARD GREEN RAL6029	4	63		NUT H M8 Z NOTCHED SHOULDER	4
23		BELT COVER M1201 YELLOW RAL1003	1	64		NUT H M6 Z NOTCHED SHOULDER	1
23		BELT COVER M1201 GREEN RAL6029	1	65		BLOCKING NUT M 14 Z DIN 985-8	1
23		BELT COVER M1201 RED RAL3001	1	66		BLOCKING NUT M 12 Z	2
23		BELT COVER M1201 BLACK RAL9005	1	67		BLOCKING NUT M 10 Z	1
24		BACK COVER M1201 GREEN RAL6029	1	68		SCREW BDR HM8 SMOOTH BASE DIN6927	5

VTB 660 - Unit

No	Code	Name	Qty	No	Code	Name	Qty
69		BLOCKING NUT HM 8 Z DIN 985/8	3				
70		BLOCKING NUT M 6 Z	8				
71		NUT HM 10Z	1				
72		SCREW BHC 8x55 CL10.9 ZN DEG WITHOUT BASE (ISO 7380/1)	2				
73		SCREW TRCC M8x80 z DIN 603 cl 4.6	2				
74		SCREW TRCC 6 X 45 Z	1				
75		POZIDRIVE SCREW M5x10Z	2				
75		POZIDRIVE SCREW M6x13Z	1				
76		SCREW POZI 4.2X16Z	2				
77		SCREW 5/16 TH24 UNF LG 25 NOTCHED SHOULDER	2				
77		SCREW H 8x25 Z DIN 6921 NOTCHED SHOULDER CL 6.8	2				
78		SCREW ST HC M8X16 DIN 914 45H	1				
79		SCREW CHC 8 X 110Z DIN 912 8.8	1				
80		SCREW CHC M6x12z	3				
81		SCREW H M14x90-34 z cl 8.8 NFE 24014 - ISO 4014	1				
82		SCREW H M12 x 60 z	1				
83		SCREW HM 10X35Z FST	1				
84		SCREW H 8x60 Z DIN 6921 NOTCHED SHOULDER CL 8.8	4				
85		SCREW H 8x35 Z DIN 6921 NOTCHED SHOULDER CL 6.8	4				
86		SCREW H M8X16 Z NOTCHED SHOULDER CL 6.8	1				
87		SCREW H 8 X 70/22Z DIN 931/6.8	2				
88		SCREW HM 6X16 Z NOTCHED SHOULD	5				
89		SCREW H 6 X 60 Z CL 6.8 NFEN 24017	2				
90		BAG OF SCREWS M1201	1				
91		BLADE LH 40x4	1				
92		BLADE RH 40x4	1				
200		LEFT TRANSMISSION HOUSING 1/5 BLACK x COMPACT	1				
201		RIGHT TRANSMISSION HOUSING 1/5 BLACK x COMPACT	1				
202		BLACK FLANGE 1/5	1				
202		FLANGE 1/5 x GREY (8120)	1				
202		Red RAL 3002 FLANGE	1				
202		YELLOW RAL 1028 FLANGE	1				
202		FLANGE 1/5 x BLUE P301	1				
202		FLANGE 1/5 x ORANGE RAL2004	1				
202		FLANGE 1/5 x YELLOW RAL1033 COMPACT	1				
202		FLANGE 1/5 x Grey RAL7000	1				
202		FLANGE 1/5 GREEN P381C	1				
203	041294	TRANSMISSION SEAL	2				
204		GREASE CAP	2				
205		SPROCKET WHEEL 8th PITCH 12.7	1				
206	041944	BLADE SHAFT 1/5 D 40 DTS 12.7/MODIF	1				
207	041945	CHAIN (80 LINKS RSF) 08B	1				
208		SPECIAL BALL BEARING 2RS	1				
209		BALL BEARING 6305 2RS	2				
210		SPECIAL BALL BEARING 6204 2RS	1				
211		3PTS SPACER FOR 1/5 TRANSMISSION	1				
212		BLOCKING NUT M 6 Z	1				
213		SCREW CHC 6 X 55 Z	1				